

POWER ACCESSORIES

NOSE-OVER BRACKETS



Nose-over brackets may be attached to slider bed or roller bed belt conveyors to smoothly bridge the transition of inclined or declined bed sections to horizontal bed sections. **NOTE:** 1-foot bed section supplied on double nose-over models.

SPECIFY MODEL NUMBER PER EXAMPLE

NO-D-15-3-RB

NO-(single or double nose-over*)-(between frames**)-(roller centers@)-(conveyor type@@)

*Specify D for double or S for single nose-over.

**Specify overall width for model 450BSB.

@Applicable for models 796RB and 450SB.

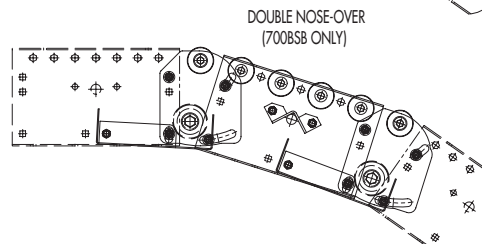
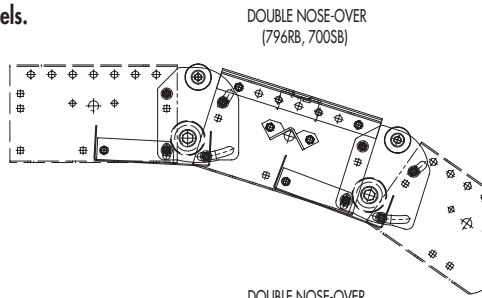
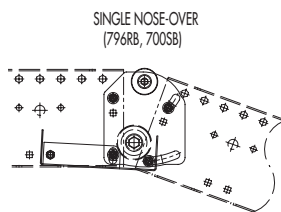
@@Specify RB for roller bed (model 796RB); SB for slider bed (model 700SB); BSB for slider bed (model 700BSB).

SPECIFICATIONS

CONSTRUCTION: 12 ga. galvanized steel. Single nose-over adjusts from 0-20° and double nose-over adjusts from 0-35°.

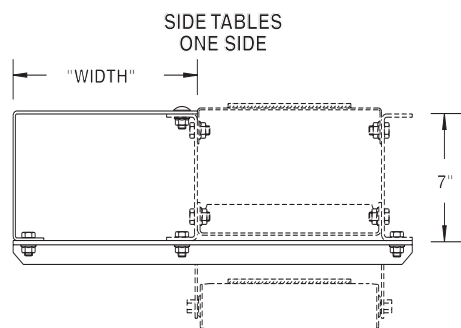
CARRIER ROLLERS: 1.9" dia. x 16 ga. steel, model 196S.

SNUB ROLLERS: 2.5" dia. x 11 ga. steel, model 251S.



■ 24 hour shipment

SIDE TABLES



Side tables are commonly used by workers in assembly operations when mounted on roller bed, slider bed and boxed slider bed belt conveyors.

SPECIFICATIONS

CONSTRUCTION: 12 ga. formed HRS steel, 7" deep.

MOUNTING HARDWARE: Included as standard integral feature of side tables. Always specify overall width and model no. of conveyor side tables mount to so that proper width and type mounting cross braces are supplied.

SPECIFY MODEL NUMBER PER EXAMPLE

ST-O-21-196RB-10

ST-(one side or both sides*)-(side table width**)-(conveyor type)-(length)

*Specify O for one side or B for both sides.

**Side table width available in 9", 15" or 21".



■ 3 week shipment