

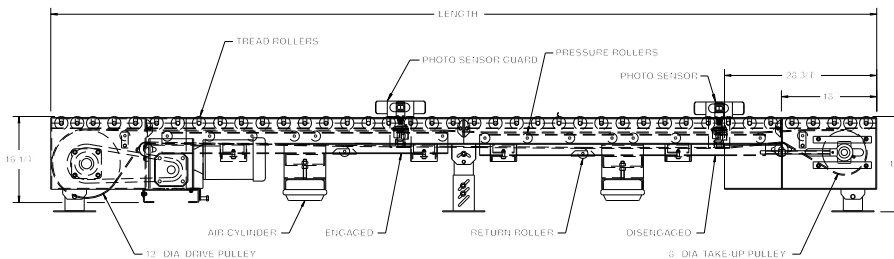
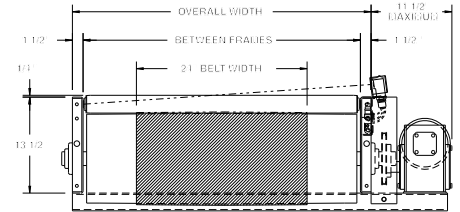
MODEL SZ251ZPA SMART ZONE® HEAVY DUTY ZERO PRESSURE ACCUMULATOR

50th Anniversary Edition

54



Model SZ251ZPA SMART ZONE® is a heavy duty zero pressure accumulator, designed to accumulate heavy products, containers and pallets in 5' zones. The Roach design incorporates photo electric sensors--instead of sensor rollers, eliminating many common problems associated with conveying wooden pallets. Products do not touch during accumulation and are singulated individually off of conveyor. Heavy loads weighing up to 4000 lbs. may be safely accumulated with Roach SMART ZONE®.



HP @ 35 FPM	REDUCER
1	RBW16150-03
1-1/2	RBW16150-03
2	RBW16300-03
3	RBW16300-03

SPECIFICATIONS

TREAD ROLLERS: 2-1/2" dia. x 11 ga. steel, model 251S.

PRESSURE ROLLERS: 1.9" dia. x 16 ga. steel, model 196S; 27" BF for all widths.

RETURN ROLLERS: 1.9" dia. x 16 ga. steel, model 196S, adjustable.

BELTING: 24" wide PVC-120 COS.

SIDE MOUNT END DRIVE: Allows one direction unit operation.

DRIVE PULLEY: 12" dia., with 1-15/16" dia. shaft, crowned and fully lagged.

TAIL PULLEY: 8" dia., crowned, with 1-3/16" dia. shaft.

TAKE-UP: Screw type unit at tail pulley provides 12" belt take-up.

BEARINGS: All pulley bearings are precision, heavy duty, lubricated, ball bearing units with cast iron housings.

BED: 5" x 1-1/2" x 3/16" formed steel channel frame slotted for tread rollers to pop-out. When unit is installed at 7'-0" elevation or higher, rollers must be retained in conveyor. Specify desired elevation. Bed sections are bolted together with butt couplings and floor supports.

SPEED: 35 FPM, constant.

ACCUMULATION: 5'-0" long zones with zone singulation operation. 1'-6" of live roller over end plates at each end of conveyor remains "live" during operation (# of zones x zone length + 3'-0" = overall conveyor length). Zones are pneumatically actuated by using photo electric sensors.

PNEUMATIC ACTUATION: Recommended air line pressure is 60 PSI.

FLOOR SUPPORTS: SH0-2 at end plates and SH-3 at intermediates provides 18" to 18-1/2" TOR. Supports provided on 5' centers and should be lagged to floor.

MOTOR DRIVE: 1 HP, 230/460/3, 60 cycle, ODP right angle gear motor.

ROLLER CHAIN: No. 60 chain provided at drive pulley. Chain take-up provided on motor base.

ELECTRICAL CONTROLS: Optional.



WARNING

Pop-out rollers should be retained in frame if unit is elevated to 7'-0" and above.

SPECIFICATION TABLE

CONVEYOR LENGTH		13'	18'	23'	28'	33'	38'	43'	48'	53'	58'	63'	68'	73'	78'	83'
BF	OAW	Unit weights (lbs.) with 4" roller centers														
39"	42"	1430	1974	2459	2944	3429	3914	4399	4884	5369	5854	6339	6824	7309	7794	8279
43"	46"	1520	2105	2623	3141	3658	4176	4694	5211	5729	6247	6765	7282	7800	8318	8836
51"	54"	1667	2308	2875	3443	4010	4577	5145	5712	6279	6846	7414	7981	8548	9116	9683
57"	60"	1783	2476	3084	3692	4301	4901	5518	6126	6734	7343	7951	8560	9168	9776	10385

		Unit weights (lbs.) with 6" roller centers														
39"	42"	1222	1686	2091	2496	2901	3306	3711	4116	4521	4926	5331	5736	6141	6456	6951
43"	46"	1299	1799	2232	2665	3097	3530	3963	4395	4828	5261	5694	6126	6569	6942	7425
51"	54"	1407	1948	2415	2883	3350	3817	4285	4752	5219	5686	6154	6621	7088	7556	8023
57"	60"	1502	1970	2468	3828	3575	4065	4572	5070	5568	6067	6565	7064	7562	8060	8559

OPTIONAL EQUIPMENT

BELTING: 12" wide PVC-120; 24" wide PVC-150.

DRIVE PULLEY: 8" dia. with 1-7/16" dia. shaft, crowned and fully lagged.

SLUG RELEASE: Products may be slug released rather than individual product release in normal zone singulation; accumulation mode will not be disturbed when slug release option utilized.

FLOOR SUPPORTS: Other height supports and knee braces available. See pages 152-156.

SPEED: Constant speed 8-120 FPM; DC variable speed; AC inverter variable speed. Other constant or variable speeds available. **NOTE: CAPACITY CHANGES WITH SPEED.**

MOTORS: Available through 3 HP in TEFC, explosion proof, dirty duty, brake motor, 115/230/1, 575/3, etc.

ELECTRICAL CONTROLS: Magnetic starter; One direction manual starter; Momentary start/stop push button station; start/stop push button station.



PHOTO SENSOR MOUNT



HEAVY DUTY AIR CHAMBER