

# MODEL 250TB TROUGH BED BELT CONVEYOR

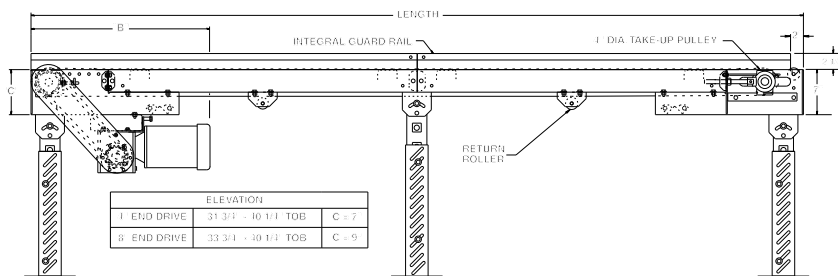
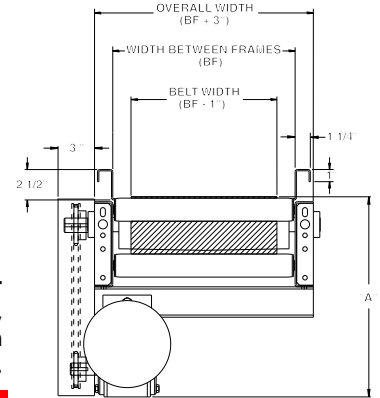
50th Anniversary Edition

10

24 HOUR SHIPMENTS INCLUDE ALL 1-FOOT INCREMENTS 5'-0" TO 100'-0"



250TB trough bed belt conveyor is ideal for handling chips, slugs, scrap wood, paper waste, boxes, packages and cartons. The troughed frame design offers integral guard rails for many trash conveyor applications.



HP @ 60 FPM	REDUCER	"A"	"B" MAX.
1/3	RBW13120-02	12-3/4"	35-23/32"
1/2	RBW13120-02	12-3/4"	35-23/32"
3/4	RBW13340-02	13-3/8"	36-13/16"
1	RBW13150-01	15"	37-1/8"
1-1/2	RBW13150-02	15"	37-1/8"
2	RBW13200-02	16-3/8"	38-13/16"

## SPECIFICATIONS

**BELTING:** PVC-120 black.

**DRIVE PULLEY:** 4" dia. with 1-3/16" dia. shaft or 8" dia. with 1-7/16" dia. shaft, both crowned and fully lagged.

**TAIL PULLEY:** 4" dia., crowned, with 1-3/16" dia. shaft.

**END DRIVE:** Allows one-direction (unit) operation; add optional center drive for reversible application.

**TAKE-UP:** Screw type unit at tail pulley provides 12" belt take-up.

**BEARINGS:** All pulley bearings are precision, heavy duty, lubricated, ball bearing units with cast iron housings.

**RETURN ROLLERS:** 1.9" dia. x 16 ga. steel, model 196S, adjustable.

**BELT SPEED:** 60 FPM, constant.

**BED:** 3-1/2" deep x 12 ga. box type bed with bed pan braces (all widths) and with 2-1/2" deep x 12 ga. formed trough with formed flanges on sides to provide extra strength.

**FLOOR SUPPORTS:** SM-6 with 4" dia. end drive adjustable 31-3/4" to 40-1/4" TOB. SM-6 with 8" dia. end drive adjustable 33-3/4" to 40-1/4" TOB. Supports provided at both ends and each bed joint. Supports should be lagged to floor.

**MOTOR DRIVE:** 1/3 H P, 230/460/3, 60 cycle, ODP right angle gear motor.

**ROLLER CHAIN:** Drive pulley is driven by No. 50 roller chain for 1-1/2 HP or less and No. 60 chain on larger drives. Chain take-up provided on motor base.

**ELECTRICAL CONTROLS:** Optional.

### WARNING

Prevent pinch points that exist when belt conveyors are permanently attached to other conveyors! Use connector brackets with safety pop out roller shown on page 127 (other stationary equipment will require proper guarding and safety devices supplied by others).



SPECIFICATION TABLE

50'-0" lengths and under are equipped with 4" dia. drive pulley; over 50'-0" includes 8" dia. drive pulley

CONVEYOR LENGTH		5'	10'	15'	20'	25'	30'	35'	40'	50'	60'	70'	80'	90'	100'
BELT	BED	Unit weights (lbs.)													
6"	7"	251	282	335	365	417	447	499	530	616	699	783	866	948	1031
12"	13"	274	316	382	424	490	532	598	640	755	863	973	1081	1189	1297
18"	19"	321	388	481	548	641	708	801	868	1038	1198	1370	1520	1679	1839
24"	25"	374	430	536	615	721	800	906	985	1183	1359	1557	1742	1928	2113
30"	31"	399	457	572	659	774	861	976	1063	1281	1463	1688	1890	2094	2296
36"	37"	436	501	631	733	863	965	1095	1196	1447	1654	1914	2146	2381	2612

OPTIONAL EQUIPMENT

**BELTING:** Black PVC ruff-top; 3-ply brown neoprene ruff-top; PVC-120 white food grade COS; PVC-150 black COS; 3-ply CN 40 urethane cover. Consult factory for other belting.

**CENTER DRIVE:** Reversible drive with integral belt take-up of 24". Specify location. Center drive option available on units 6'-0" long and above.

**SIDE MOUNTED END DRIVE:** Provides minimum conveyor height of 10" TOB (4" dia. drive pulley); 12" TOB (8" dia. drive pulley).

**OVERHEAD END DRIVE:** Provides minimum conveyor height of 10" TOB (4" dia. drive pulley); 12" TOB (8" dia. drive pulley).

**BELT SPEED:** Constant speed 10-120 FPM; DC variable speed; AC inverter variable speed. Other constant or variable speeds available. **NOTE: CAPACITY CHANGES WITH SPEED.**

**AUXILIARY TAKE-UP:** Provides 24" of belt take-up. Specify location. See pages 124-125.

**UNDERTRUSSED BED:** Available to provide clearance underneath unit at bed joint locations. Specify location for undertrussing and desired clearance underneath unit. Consult factory.

**MOTORS:** Available through 3 HP in TEFC, explosion proof, dirty duty, brake motor, 115/230/1, 575/3, etc.

**FLOOR SUPPORTS:** Other height supports, knee braces, casters and polytier supports available. See pages 152-155.

**CEILING HANGERS:** 5/8" dia. threaded rod with hardware to attach rods to conveyor. Provides 6' clearance between ceiling and TOB (furnished in place of floor supports). See page 153.

**GUARD RAILS:** Available in 2", 4" and 6" heights (model FSG) to attach to troughed frame to increase trough depth. See page 157.

**ELECTRICAL CONTROLS:** Magnetic starter (one direction or reversible); One direction manual starter; Momentary start/stop push button station; Forward/reversing /stop push button station. Mounting and pre-wiring for units up to 12' long.



DETAIL OF INTERMEDIATE BED SECTION



OPTIONAL OVERHEAD MOUNTED DRIVE